



WHISKEY+BOOTS

THE QUADRANGLE



**BARKING
GECKO**  **ARTS**

**Technical
Specification**

TECHNICAL SPECIFICATION

VERSION 2.0 - 10th of MARCH 2025

PERFORMER – Georgia King
PERFORMER – Mark Storen

WHISKEY & BOOTS
MARK STOREN
GEORGIA KING

MUSICIAN – Bridget Turner
MUSICIAN – Claudia Tero

BARKING GECKO ARTS
CHIEF EXECUTIVE – Ryan Taaffe
PRODUCTION MANAGER – Stewart Campbell
SENIOR PRODUCER – Natalie Di Risio

CONTACTS

Senior Producer
Barking Gecko Arts
Natalie Di Risio
natalie.dirisio@barkinggecko.com.au (08)
6184 4905 | +61 411 341 643

Production Manager
Barking Gecko Arts
Stewart Campbell
stewart.campbell@barkinggecko.com.au (08)
6184 4905 | +61 407 817 077

VERSION 2.0

TABLE OF CONTENTS:

Performance Description	2
Staging	2
Stage Management and Control	2
Set Elements.....	2
Masking and Drapery	3
Set Plans.....	5
Lighting	6
Projection.....	6
Sound	6
Sound Plan	7
Dressing Rooms	8
Consumables	8
Freight	8
Schedule.....	9
Touring Personell.....	9
Plans and Venue Information.....	10



Production Description:

“Kids Tell It Like It Is”

The Quadrangle is a unique verbatim theatre performance that explores the candid perspectives of young people. In this production, actors present live interviews with children, and relay the words exactly as they hear them, without any embellishment. Accompanied by live music, this performance captures the raw, heartfelt, and humorous insights of children as they share their views on life, the world, and their dreams for the future. The show inspires reflection on the value of young voices and their often-profound wisdom.

Staging:

Minimum stage dimensions for *THE QUADRANGLE* are as follows:

Proscenium Width	7000mm
Stage Depth	5000mm
Stage Width	7000mm
Proscenium Height	3500mm
Minimum Grid Height	4000mm

THE QUADRANGLE positions for projection to be placed to allow front projection of the screen surface, venue standard lighting and sound rig positions

Stage Management and Control:

THE QUADRANGLE tours with a QLAB computer for sound and video playback. All other technical systems to be provided by presenting venue. Stage Manager/Sound Operator is to be placed front of house in an appropriate position to mix the dialogue and live music elements of the performance.

No lighting, sound or video equipment is toured with the show other than QLAB playback.

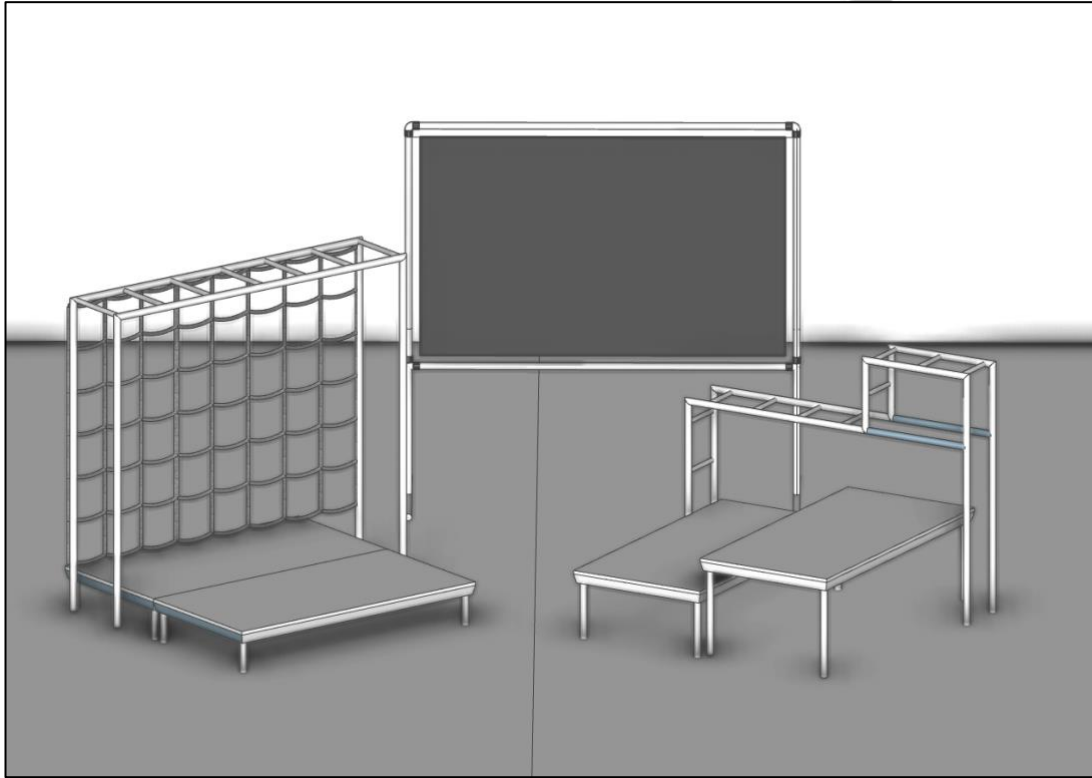
Set Elements:

THE QUADRANGLE's design is based around two performance rostra stages. The following elements are toured as part of the show:

- 4 x (1m x 2m) Staging Rostra
- All legs to suit
- OP Monkey Bar (2150mm x 2200mm)
- PS Monkey Bar (2150mm x 1600mm)
- Projection Screen (2400mm x 2600mm)
- 2 x Metal Chair
- Keyboard Stand
- 2 x Guitar Stands

Musician stage sections are 200mm and the performer section is split between 450mm and 650mm high.

Final placement of the staging elements can move slightly to improve sightlines.



Masking and Drapery:

Standard house masking should be sufficient for all presentations of *THE QUADRANGLE*.

Upstage black smother should be placed to cover rear wall of the performance space.

Venue should be able to achieve a full blackout to allow ideal conditions for video projection and lighting design elements.

THE QUADRANGLE CAN EXPAND AND CONTRACT THE SIZE OF THE SET DEPENDING ON THE VENUE DIMENSIONS.

IT IS POSSIBLE TO SAVE ON SOME FREIGHT COSTS IF THE PRESENTER IS ABLE TO SUPPLY STAGING ROSTRA SECTIONS AND LEGS.

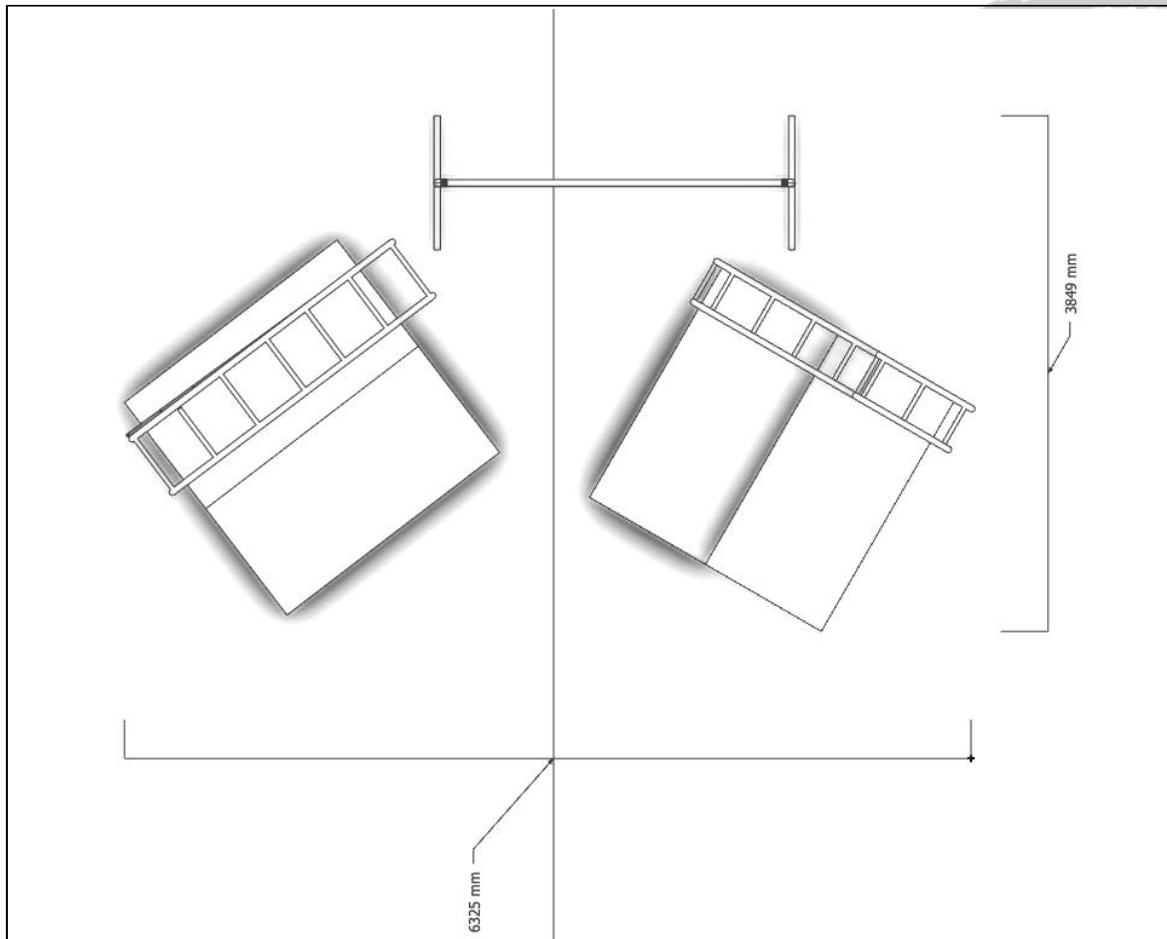


The Quadrangle – Set Photo – front on

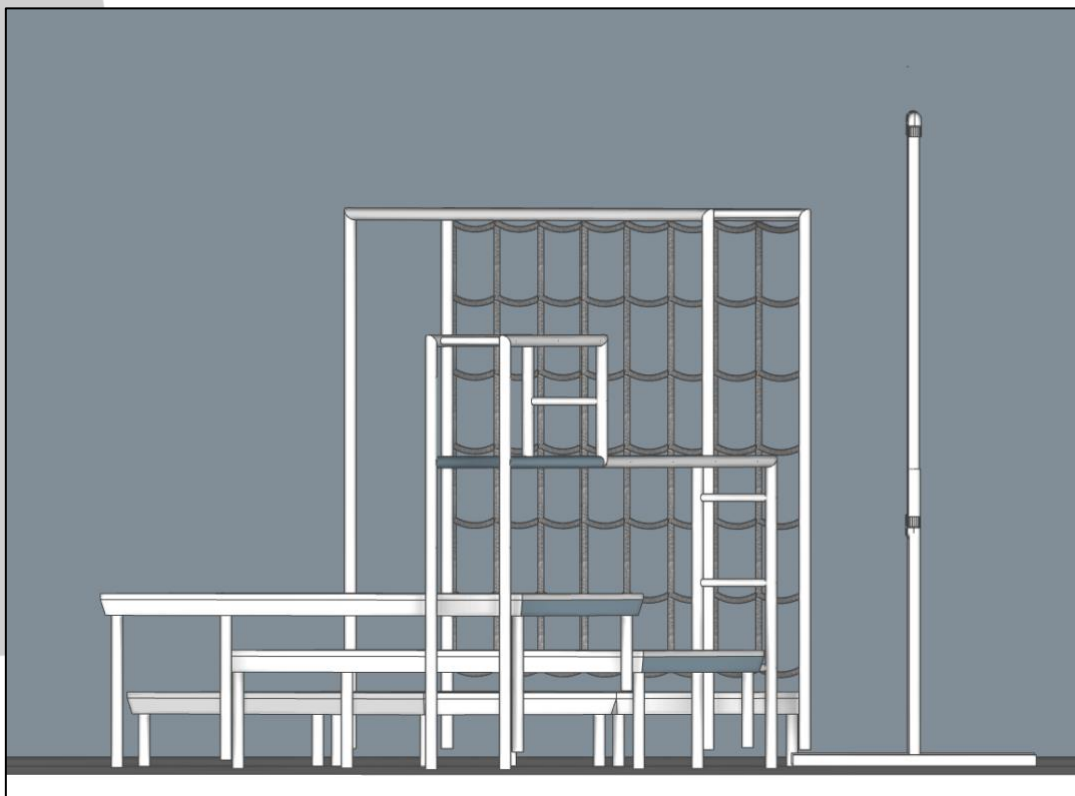


The Quadrangle – Set Photo – front on

THE QUADRANGLE - TECHNICAL SPECIFICATION



PLAN VIEW – not to scale



SECTION VIEW – not to scale



Lighting:

THE QUADRANGLE requires use of the venue standard lighting rig. Ideally a few lighting states are achieved to provide differentiation between interview and musical sections of the performance.

If possible five specials can be focused on the specific positions that the performers sit in during each interview sections. This allows further isolation of these performative sections.

A colour wash top light or backlight across the whole stage is desirable to further enhance the performance.

Discussion with Barking Gecko Arts regarding venue standard lighting rig is required to plan for the ideal presentation for both the production and the venue.

Projection:

THE QUADRANGLE has an upstage projection screen for all visuals used in the performance.

Venue to provide projector and all cabling to get signal from QLAB computer at ops position.

Touring producer will tour appropriate adapters to achieve HDMI output from QLAB computer.

Sound:

THE QUADRANGLE has two streams to its sound requirements. The live music and dialogue elements that the audience hear and the interview dialogue that only the two performers hear.

For the live music and dialogue the production requires a good quality FOH PA system with Right, Left and Sub sends. Most venues will be able to facilitate this with their Standard house rig.

Further to this the following is required to be provided by the presenting venue:

- 5 x Vocal Microphones (SM58 or similar)
- 2 x Tall boom microphone stands
- 1 x Short boom microphone stand
- 1 x Instrument Microphone (SM57 or similar)
- 1 x Amp microphone stand
- 3 x DI Boxes (2 x guitar, 1 x keys)
- 2 x Foldback speakers
- Sound Mixer (min 15 inputs, 6 outputs)
- All signal cabling from stage to PA

Producing company will tour the following sound equipment:

- QLAB Computer (Apple Mac)
- Sennheiser IEM System
- 2 x Acoustic Guitars
- 2 x Custom Boom Mic Stands
- 1 x Electric Guitar
- 1 x Guitar Amplifier
- 1 x Keyboard
- All instrument cabling

Please find a line list and stage layout on the following page for detailed setup of sound requirements.

Touring systems assume a direct USB connection to sound console for QLAB outputs. If digital console not available and interface will be required to connect QLAB to sound system.

THE QUADRANGLE

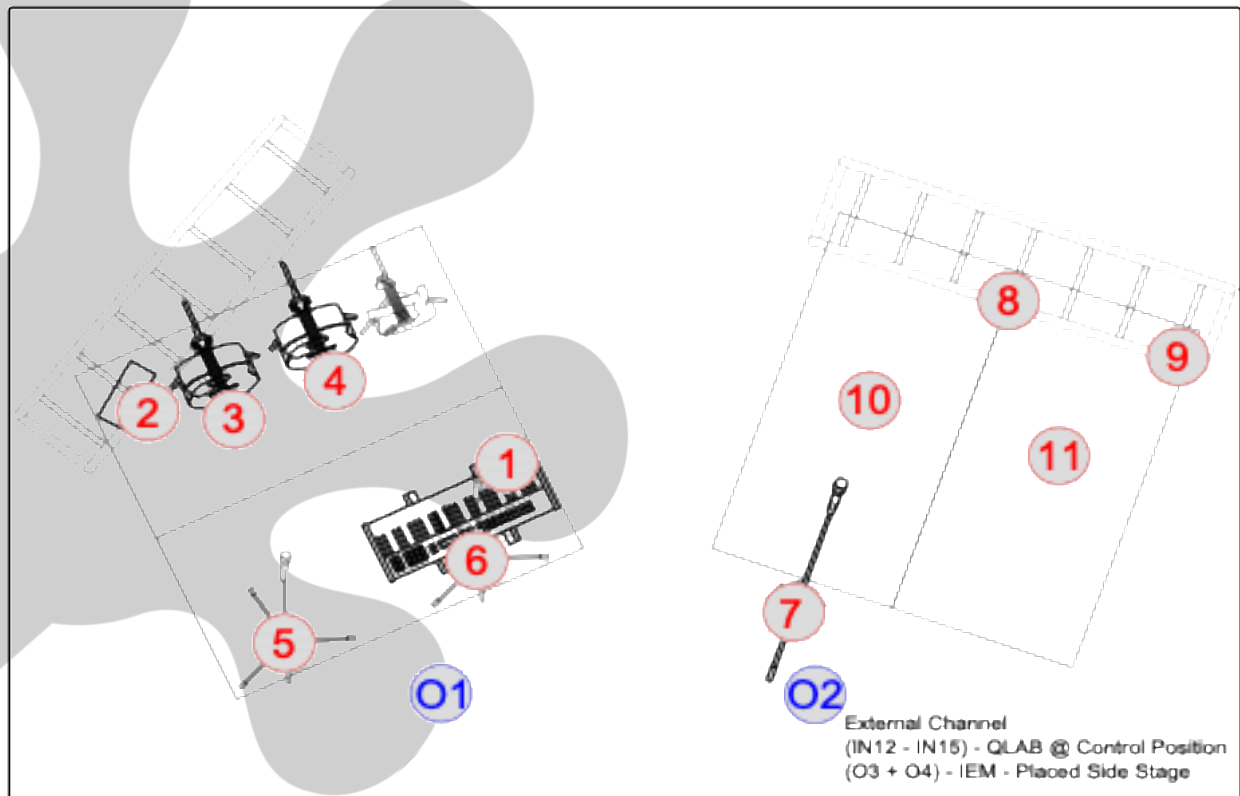
INPUT/ OUTPUT LIST v3



WHISKY+BOOTS

Line Type	Purpose	Microphone	Notes
1 Input	Keys/ Synth	DI	
2 Input	Qtr Amp	Sm57	Short Boom Stand (Amp USL facing US)
3 Input	Acoustic Qtr L	DI	
4 Input	Acoustic Qtr R	DI	
5 Input	Band Vox L - Bridget	SM58 / E835	Tall Boom Stand
6 Input	Band Vox R - Claudia	SM58 / E835	Tall Boom Stand
7 Input	Dialogue Vox DSC	SM58 / E835	Short Boom Stand
8 Input	Dialogue Vox L	SM58 / E835	Mic Clamp to set - toured
9 Input	Dialogue Vox R	SM58 / E835	Mic Clamp to set - toured
10 Input	QLAB Track L	USB Input	
11 Input	QLAB Track R	USB Input	
12 Input	QLAB House Music L	USB Input	
13 Input	QLAB House Music R	USB Input	
1 Output	Band Foldback	House PA	Set output Pre-Fade
2 Output	Performer Foldback	House PA	Set output Pre-Fade
3 Output	Performer IEM L	Sennheiser IEM System	Set output Pre-FadeToured IEM system
4 Output	Performer IEM R	Sennheiser IEM System	Set output Pre-FadeToured IEM system
# Output	FOH L	House PA	Venue Standard patch
# Output	FOH R	House PA	Venue Standard patch

STAGE PLOT



Dressing Rooms:

The presenter is to provide a minimum of two dressing rooms. These rooms should be for the use of the touring company for the duration of the season. All dressing rooms must have adequate access to costume hanging racks; have toilet and shower facilities and dressing tables, chairs, and mirrors with adequate lighting for performers to apply makeup.

Dressing Rooms allocation will be below:

- 1 x Dressing Room for Male performers
- 1 x Dressing Room for Female performers

Additional Backstage requirements:

- Access for the company Greenroom / Kitchenette facilities (does not need to be exclusive access)

Consumables:

Venue to provide all tapes, lighting filters and additional consumable stock. The touring company will provide consumables for the ongoing upkeep and maintenance of the set, props and wardrobe.

Freight and Transport:

The show travels in a car and a trailer or can be freighted to the venue location through third party freight providers.

Internal door height within the venue for set piece access cannot be lower than 2200mm or narrower than 800mm.

The set for *THE QUADRANGLE* can be broken down to fit through the corridors of most venues.

If venue staff foresee that any loading and unloading issues might arise during bump in and out, please inform touring company to assess and determine best path forward.



Schedule:

THE QUADRANGLE requires three to four hours to bump in, in each venue, with the first possible performance following this. LX, Sound and masking pre-rig must have occurred prior to touring company's arrival. This must include full testing and focusing of lighting rig so lighting plotting can occur as soon as possible. If specials are available, a quick focus of these specials will occur once the set is assembled and in place.

Bump in requires the following crew members to achieve the mentioned bump in time:

- 1 x Staging/Mech
- 1 x Sound Technician
- 1 x Lighting Technician.

If these positions are unavailable, please discuss bump in with touring producer to schedule the bump in accordingly. The touring company is happy and willing to work with venues around staffing availability to achieve the best outcome for the production.

The production requires 1 x venue technician to operate lighting as show crew.

Access to venue is needed 90 minutes prior to the show time, and there is 30 minutes of access post show required. Show crew will need to be called for this time.

Venue staff should be experienced in their relevant areas.

Bump out will occur immediately after final performance and should be completed within 90 minutes. Venue crew required:

- 1 x Staging/Mech
- 1 x Sound

Touring Personnel:

THE QUADRANGLE tours with the following staff:

- 2 x Cast
- 2 x Musician
- Production Manager/Sound Operator

Plans and Venue Information:

The touring company require the venue to provide CAD plans for the venue in .dwg or .dxf formats. Where possible please include the following:

- Plan View of the Venue and Stage
- Section View of the Venue and Stage
- Front Elevation of the Stage
- Standard Lighting, Sound and Masking Plans
- Plans of Loading Dock through to Stage
- Additional venue information is greatly appreciated.
- Venue Technical Specifications
- Lighting, Sound and Masking Inventory
- Hanging Plot
- Any photos of the stage and auditorium



VERSION	DATE	AUTHOR	CHANGES	SIGNED
V1	29/01/2025	SC	Technical Specification Completed	SC
V2	10/03/2025	SC	Added BGA References Added Photos	SC